

Mendip House Welwyn Street, London, E2 0JW

We are pleased to present this one bedroom located on Welwyn Street, E2.

The property comprises of a living room, kitchen, bathroom, comes furnished. First floor flat overlooking a lovely courtyard garden. The street is a quiet leafy cul-de-sac in Bethnal Green. There is street parking, resident parking permit required. The property is a Victorian red brick flat with original sash windows solid oak floors and new fitted kitchen and bathroom. The bathroom has a Grohe shower, heated towel rail and Japanese Toto toilet.

Nearby are lovely cafes, pubs and restaurants. 4 mins walk to Bethnal Green tube station. Eight mins walk from Victoria Park with Sunday Market. Four mins walk to York Hall leisure centre. Ten mins walk to Cambridge Heath overground station. Close to Broadway Market, V&A Museum of Childhood.

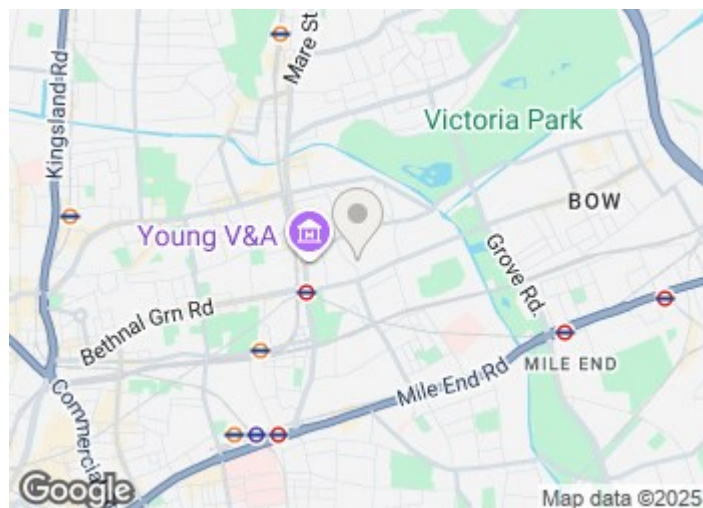
£1,895 Per Month

Mendip House Welwyn Street

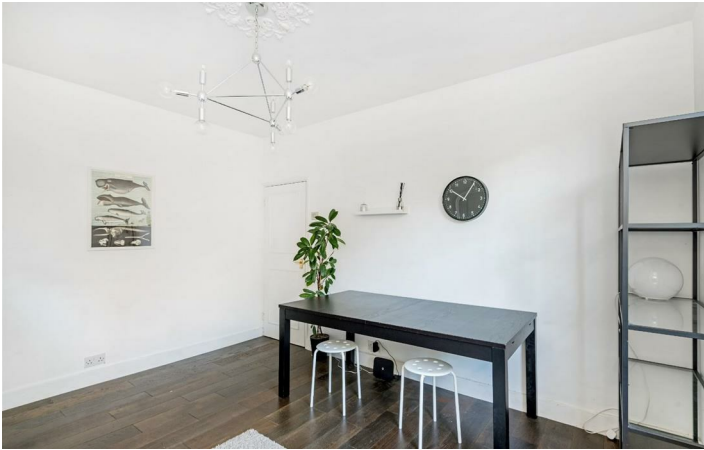
, London, E2 0JW



- One bedroom
- One bathroom
- Great Location
- Furnished
- Must Be Seen
- Available to Rent from the 17th Jan 2026.

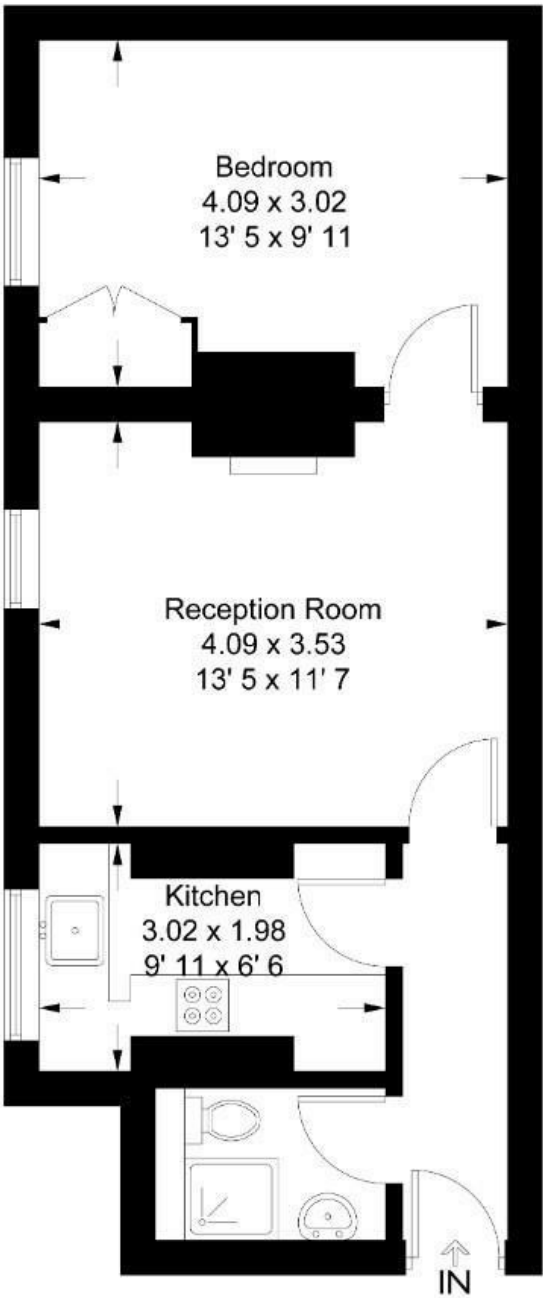


Directions



Mendip Houses

Approximate Gross Internal Area = 446 sq ft / 41.4 sq m



First Floor

Not to scale, for guidance only and must not be relied upon as a statement of fact
All measurements and areas are approximate only and have been prepared in accordance with the current edition of the RICS Code of Measuring Practice

These particulars, whilst believed to be accurate are set out as a general outline only for guidance and do not constitute any part of an offer or contract. Intending purchasers should not rely on them as statements of representation of fact, but must satisfy themselves by inspection or otherwise as to their accuracy. No person in this firms employment has the authority to make or give any representation or warranty in respect of the property.

Energy Efficiency Rating			Environmental Impact (CO ₂) Rating		
Very energy efficient - lower running costs			Very environmentally friendly - lower CO ₂ emissions		
(92 plus) A			(92 plus) A		
(81-91) B			(81-91) B		
(69-80) C			(69-80) C		
(55-68) D			(55-68) D		
(39-54) E			(39-54) E		
(21-38) F			(21-38) F		
(1-20) G			(1-20) G		
Not energy efficient - higher running costs			Not environmentally friendly - higher CO ₂ emissions		
England & Wales			England & Wales		
EU Directive 2002/91/EC			EU Directive 2002/91/EC		